



### DATA VIEW

**BHUJ NAGARPALIKA**

District : Kachchh  
Taluka : BHUJ  
City : BHUJ

Info Category : GENERAL INFORMATION  
Info Level : HOUSEHOLDS  
Info Query : Ration Card Type  
Select Ward No : 2

#### URBAN PLANNING SUPPORT SYSTEM

Legend

- Ration Card Type
  - APL
  - BPL
  - AAY
  - NO RATION CARD
  - DONT KNOW
  - DNA
- Institute
  - MUNICIPALITY
  - GOVT OFFICES
  - POLICE STATION
  - POST BOX
  - COURT
  - WATER TANK
  - BUS STAND
  - COMMUNITY HALL
  - PETROL PUMP

Selection

No features selected

1: 11584.4388

Powered by MapGuide

Developed By K-LINK FOUNDATION

अर्जन प्वाणीग सपोर्ट सीस्टम

**DATA VIEW** URBAN PLANNING SUPPORT SYSTEM

**BHUJ NAGARPALIKA**

District : Kachchh  
Taluka : BHUJ  
City : BHUJ

Info Category : GENERAL INFORMATION  
Info Level : HOUSEHOLDS  
Info Query : Ration Card Type  
Select Ward No : 11

**Legend**

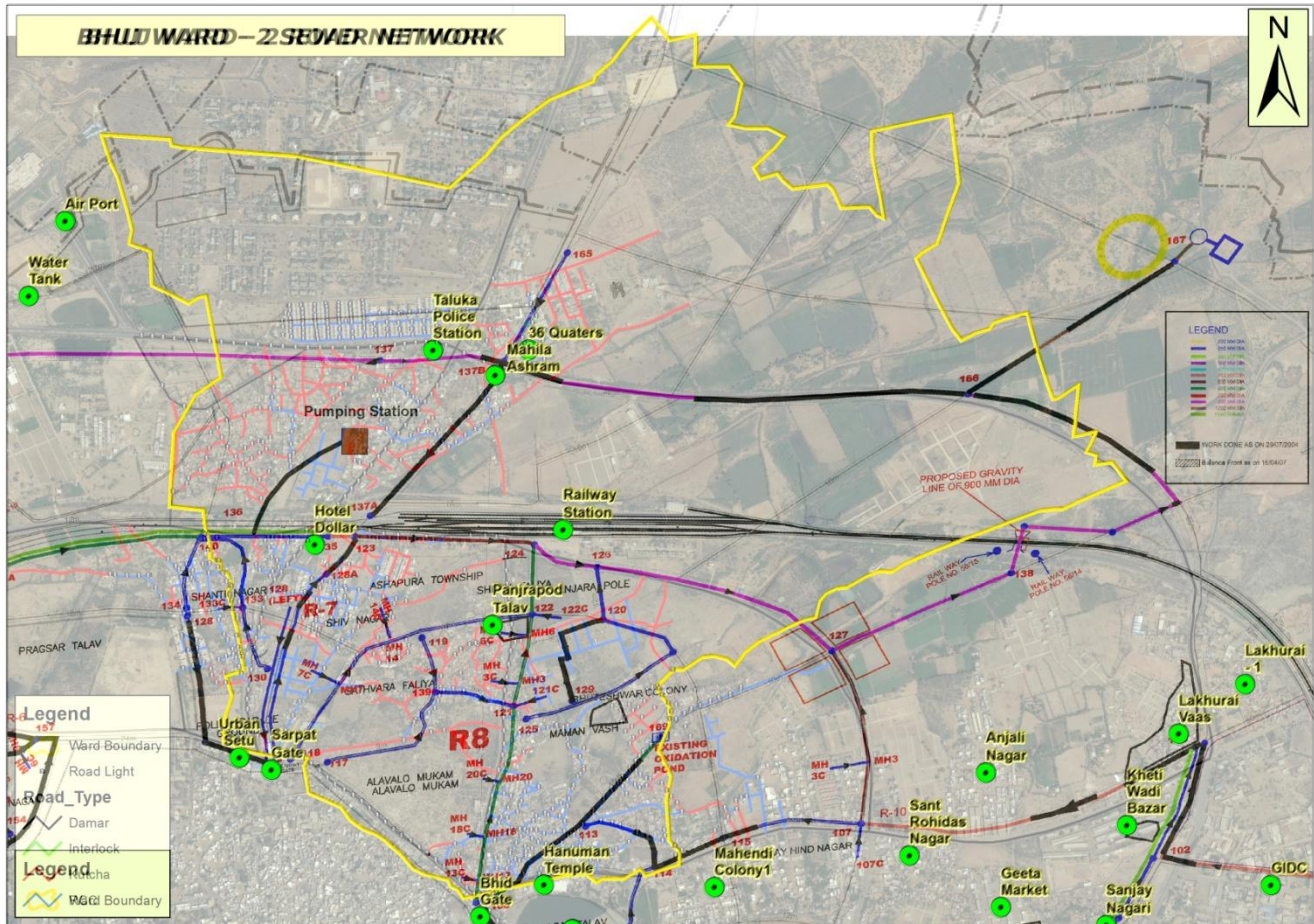
- APL
- BPL
- AAY
- NO RATION CARD
- DONT KNOW
- DNA
- Institute
- MUNICIPALITY
- GOVT OFFICES
- POLICE STATION
- POST BOX
- COURT
- WATER TANK
- BUS STAND
- COMMUNITY HALL
- PETROL PUMP

No features selected

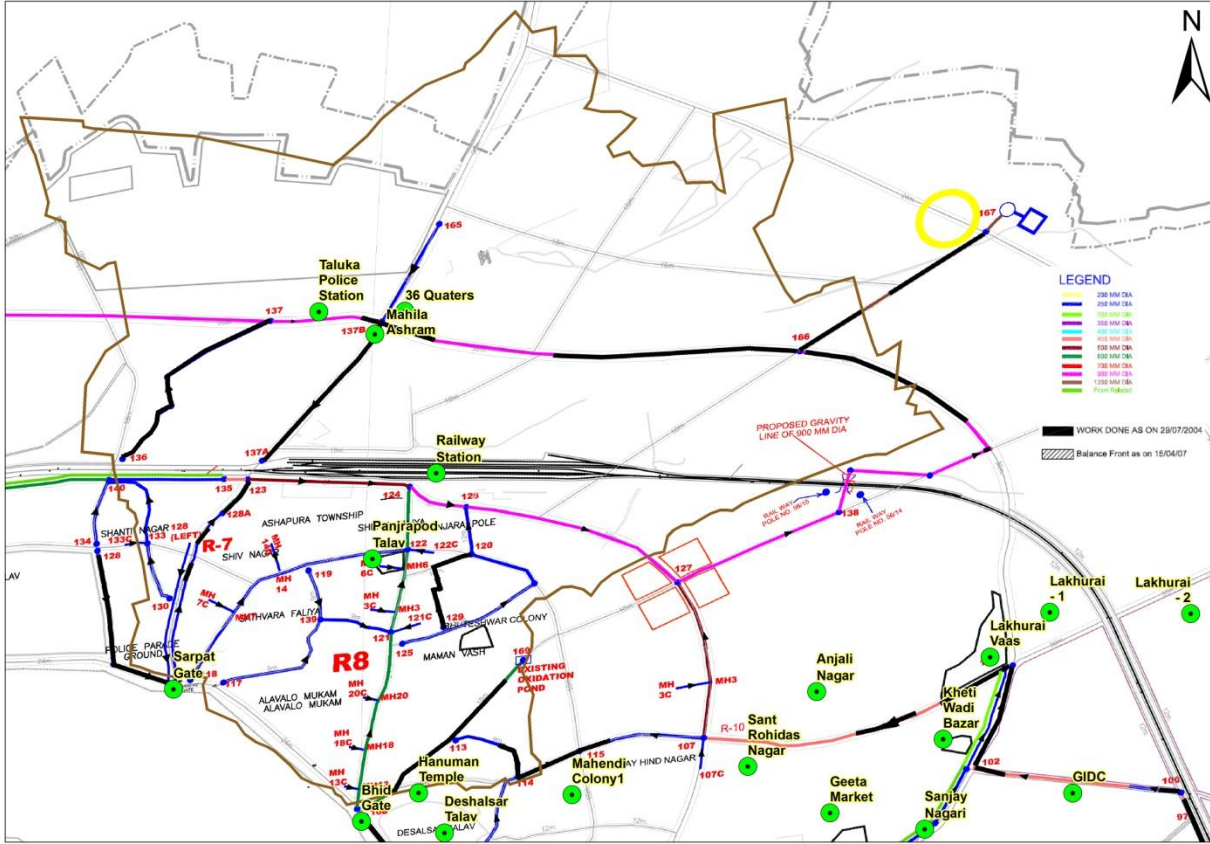
1: 25456 1659

Powered by MapGuide

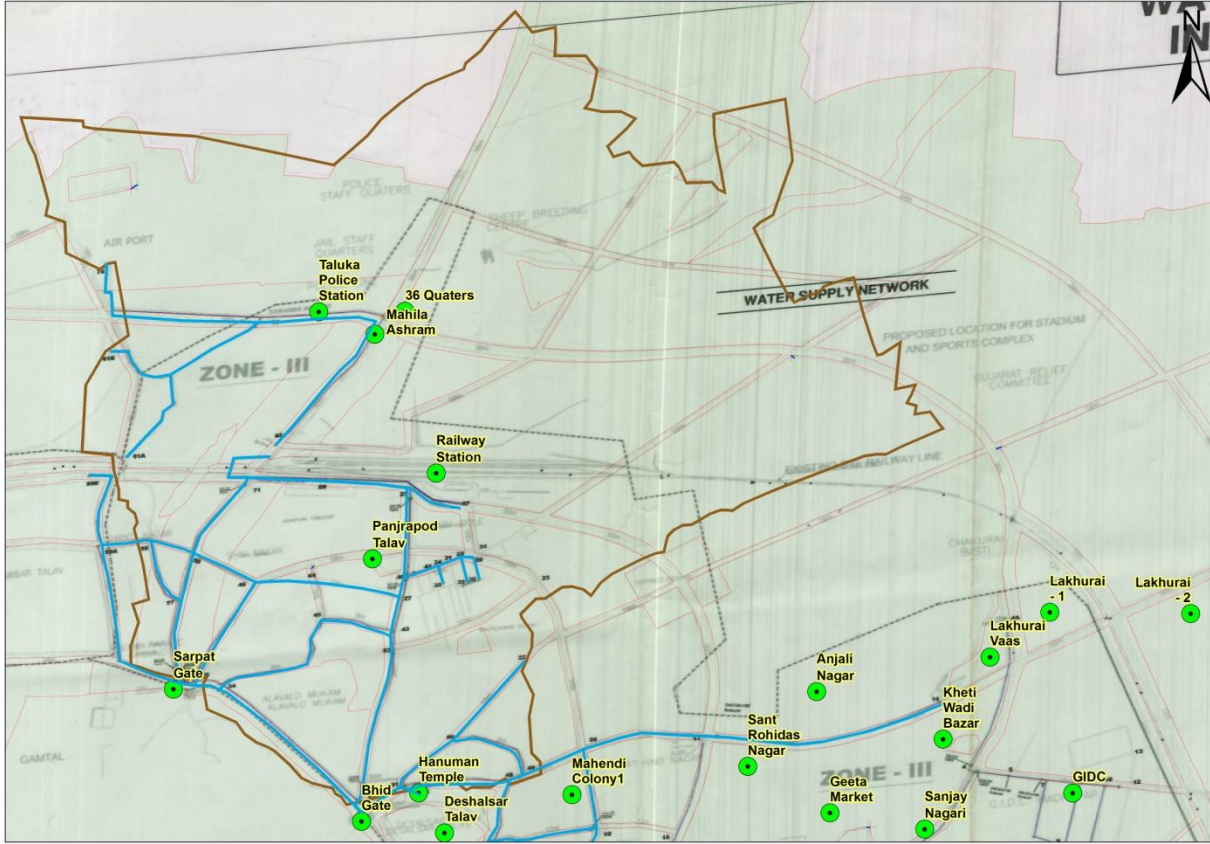
Developed By K-LINK FOUNDATION



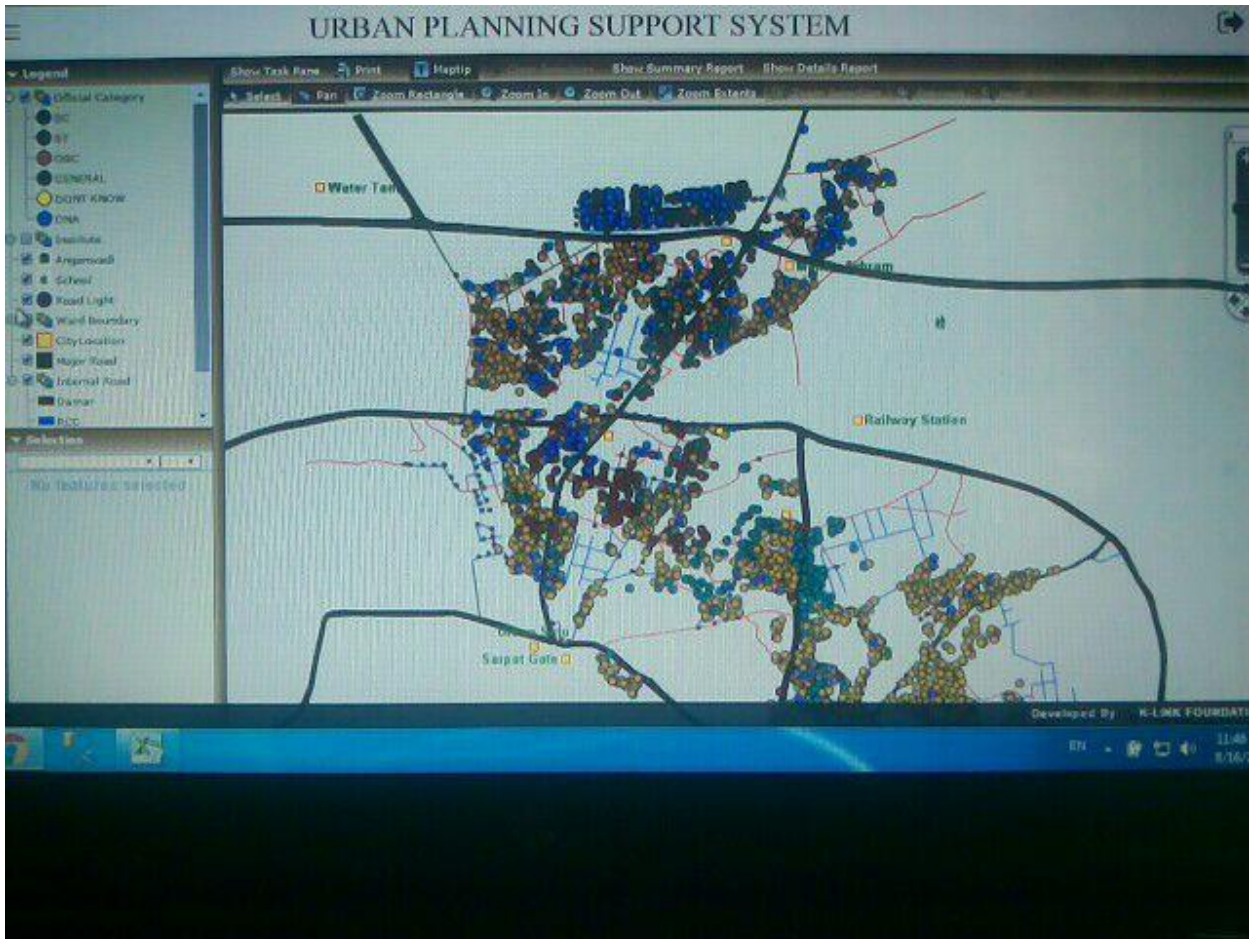
# अर्जन प्वाजीग सपोर्ट सीस्टम



અર્બન પ્લાનીંગ સપોર્ટ સીસ્ટમ



અર્બન પ્લાનીંગ સપોર્ટ સીસ્ટમ



## Urban Profile

( Data Collection Year : 2016 )

City Name : BHUJ

Ward : 2

Print Date : 01-Jun-2016

## Age wise Population

	Male		Female		TOTAL	
Between 0 and 10	2,437	25.40%	2,277	24.92%	4,714	25.16%
Between 11 and 30	4,205	43.82%	4,059	44.42%	8,264	44.11%
Between 31 and 50	2,166	22.57%	1,941	21.24%	4,107	21.92%
Above 50	788	8.21%	860	9.41%	1,648	8.80%
<b>TOTAL</b>	<b>9,596</b>	<b>100.00%</b>	<b>9,137</b>	<b>100.00%</b>	<b>18,733</b>	<b>100.00%</b>

## Official Category wise Population

	Male		Female		TOTAL	
SC	904	9.42%	886	9.70%	1,790	9.56%
ST	1,460	15.21%	1,429	15.64%	2,889	15.42%
OBC	5,673	59.12%	5,402	59.12%	11,075	59.12%
GENERAL	1,447	15.08%	1,328	14.53%	2,775	14.81%
DONT KNOW	112	1.17%	92	1.01%	204	1.09%
<b>TOTAL</b>	<b>9,596</b>	<b>100.00%</b>	<b>9,137</b>	<b>100.00%</b>	<b>18,733</b>	<b>100.00%</b>

## Religion wise Population

	Male		Female		TOTAL	
HINDU	3,974	41.41%	3,772	41.28%	7,746	41.35%
MUSLIM	5,566	58.00%	5,312	58.14%	10,878	58.07%
SIKH	30	0.31%	27	0.30%	57	0.30%
CHRISTIAN	26	0.27%	26	0.28%	52	0.28%
<b>TOTAL</b>	<b>9,596</b>	<b>100.00%</b>	<b>9,137</b>	<b>100.00%</b>	<b>18,733</b>	<b>100.00%</b>

### Commercial Type

	TOTAL	
SHOP	477	61.63%
FIX CART	142	18.35%
MOBILE CART	39	5.04%
CLOSE SHOP	116	14.99%
TOTAL	774	100.00%

### Commercial Tax

	TOTAL	
YES	286	36.95%
NO	362	46.77%
DNA	126	16.28%
TOTAL	774	100.00%

### Health

	TOTAL	
PRIVATE	9	100.00%
TOTAL	9	100.00%

### Anganvadi

	TOTAL	
RENTED STRUCTURE	12	100.00%
TOTAL	12	100.00%

### Schools

	TOTAL	
GOVERNMENT SCHOOL	4	66.67%
PRIVATE	2	33.33%
TOTAL	6	100.00%

### Votercard

	Male		Female		TOTAL	
YES	4,901	51.07%	4,485	49.09%	9,386	50.10%
NO	822	8.57%	1,058	11.58%	1,880	10.04%
NA	3,873	40.36%	3,594	39.33%	7,467	39.86%
TOTAL	9,596	100.00%	9,137	100.00%	18,733	100.00%

### House Type

	TOTAL	
PUCCA	1,474	32.89%
KUTCHA	366	8.17%
SEMI PUCCA	2,191	48.90%
HUT	87	1.94%
DNA	363	8.10%
TOTAL	4,481	100.00%

### RationCard Holders

	TOTAL	
APL	2,289	51.08%
BPL	1,185	26.44%
AAY	2	0.04%
NO RATION CARD	625	13.95%
DONT KNOW	17	0.38%
DNA	363	8.10%
TOTAL	4,481	100.00%

### Sewer Facility

	TOTAL	
MUNICIPALITY CONNECTION	1,859	41.49%
SOAK PIT	1,575	35.15%
NO CONNECTION	684	15.26%
DNA	363	8.10%
TOTAL	4,481	100.00%

### Electricity Facility

	TOTAL	
OWN METER	3,619	80.76%
SHARING WITH NEIGHBOUR	450	10.04%
NO ELECTRICITY CONNECTION	49	1.09%
DNA	363	8.10%
TOTAL	4,481	100.00%



### Suvarna Jayanti Card

	TOTAL	
YES	254	5.67%
NO	3,797	84.74%
DONT KNOW	67	1.50%
DNA	363	8.10%
TOTAL	4,481	100.00%

### Bank Account

	TOTAL	
YES	2,475	55.23%
NO	1,643	36.67%
DNA	363	8.10%
TOTAL	4,481	100.00%

### Drinking Water Facility

	TOTAL	
TAP CONNECTION	3,658	81.63%
PUBLIC STAND POST	24	0.54%
HAND PUMP	42	0.94%
TANKER	33	0.74%
FROM NEIGHBOUR HOUSE	289	6.45%
CANNEL	5	0.11%
UNDERGROUND RAIN WATER HARVESTING	13	0.29%
BOR	54	1.21%
DNA	363	8.10%
TOTAL	4,481	100.00%

### Drinking Water Quality

	TOTAL	
SOFT PORTABLE WATER	4,028	89.89%
INSIPID WATER	75	1.67%
SALTY WATER	7	0.16%
HARD SALINE WATER	8	0.18%
DNA	363	8.10%
TOTAL	4,481	100.00%

### Waste Disposal

	TOTAL	
MUNICIPALITY DUSTBIN	1,619	36.13%
WASTE DUMP	2,155	48.09%
ROAD SIDE	308	6.87%
IN RIVER	29	0.65%
NALA	7	0.16%
DNA	363	8.10%
TOTAL	4,481	100.00%

### Residencal Tax

	TOTAL	
YES	933	20.82%
NO	2,497	55.72%
DONT KNOW	688	15.35%
DNA	363	8.10%
TOTAL	4,481	100.00%

અર્જન પ્લાનીંગ રિપોર્ટ સીસ્ટમ

**Educational Status**

		Between 0 to 10	Between 11 to 30	Between 31 to 50	Above 50	TOTAL
Male	No Formal Education	420 17.23%	922 21.93%	915 42.24%	414 52.54%	2,671 27.83%
	Functional R/W	2 0.08%	47 1.12%	64 2.95%	43 5.46%	156 1.63%
	Nursary / anganvadi	209 8.58%	3 0.07%	2 0.09%	0 0.00%	214 2.23%
	Primary	990 40.62%	2,031 48.30%	648 29.92%	213 27.03%	3,882 40.45%
	Secondary	0 0.00%	685 16.29%	309 14.27%	74 9.39%	1,068 11.13%
	Higher Secondary	0 0.00%	198 4.71%	80 3.69%	18 2.28%	296 3.08%
	PTC	0 0.00%	4 0.10%	3 0.14%	0 0.00%	7 0.07%
	ITI	0 0.00%	12 0.29%	4 0.18%	0 0.00%	16 0.17%
	Diploma	0 0.00%	21 0.50%	5 0.23%	0 0.00%	26 0.27%
	Graduate	0 0.00%	198 4.71%	86 3.97%	16 2.03%	300 3.13%
	Post Graduate	0 0.00%	34 0.81%	25 1.15%	5 0.63%	64 0.67%
	Engineering	0 0.00%	10 0.24%	3 0.14%	0 0.00%	13 0.14%
	Above Post Graduation	0 0.00%	29 0.69%	19 0.88%	4 0.51%	52 0.54%
	Other	0 0.00%	3 0.07%	1 0.05%	0 0.00%	4 0.04%
	NA	816 33.48%	8 0.19%	2 0.09%	1 0.13%	827 8.62%
TOTAL	2,437 100.00%	4,205 100.00%	2,166 100.00%	788 100.00%	9,596 100.00%	
Female	No Formal Education	438 19.24%	1,303 32.10%	1,166 60.07%	687 79.88%	3,594 39.33%
	Functional R/W	2 0.09%	60 1.48%	53 2.73%	26 3.02%	141 1.54%
	Nursary / anganvadi	195 8.56%	0 0.00%	0 0.00%	0 0.00%	195 2.13%
	Primary	897 39.39%	1,961 48.31%	486 25.04%	121 14.07%	3,465 37.92%